



**SAIGON**

**CONSTRUCTION CONSULTANTS CO., LTD**

45 Phan Ba Phien Street, Ward 12, Tan Binh District, Ho Chi Minh City, Vietnam

# HEAD OFFICE

---

**Address :** 45 Phan Ba Phien Street, Ward 12, Tan Binh District, Ho Chi Minh City, Vietnam

**Tel :** (84-8) 3811 8060      **Fax:** (84-8) 3811 8061

**Web :** [www.saigoncc.com.vn](http://www.saigoncc.com.vn)

**Email :** [scc@saigoncc.com.vn](mailto:scc@saigoncc.com.vn)

# PROFESSIONAL CONSULTANTS

---

- ✓ ***I*NDUSTRIES**
- ✓ ***R*ESIDENTIAL BUILDINGS**
- ✓ ***C*OMMERCIAL BUILDINGS**

# PROFESSIONAL DESIGNER

---

- ✓ *P* LANNING
- ✓ *A* RCHITECHTURE
- ✓ *S* TRUCTURE
- ✓ *I* NFRASTRUCTURE
- ✓ *M* & *E*



# PROFESSIONAL MANAGER

---

✓ ***P**ROJECT MANAGEMENT*

✓ ***P**ROCUREMENT*

✓ ***S**ITE SUPERVISION*

✓ ***Q**UANTITY ASSESSMENT*

# CONSULTANCY SERVICES

---

- ✓ ***F** EASIBILITY STUDY*
- ✓ ***E** NVIRONMENTAL IMPACTED STUDY*
- ✓ ***S** OIL INVESTIGATION*
- ✓ ***L** AND SURVEY*
- ✓ ***S** UBMISSION TO AUTHORITIES*

# RELATIONSHIP

---

- ✓ ***L*** ***OCAL AUTHORITIES***
- ✓ ***I*** ***NDUSTRIAL PARK MANAGEMENT BOARD***

# OUR CLIENTS

---

✓ **J**APAN

✓ **S**INGAPORE

✓ **V**IETNAM

✓ **P**HILIPPINE

✓ **K**OREA

✓ **C**ANADA

✓ **C**HINA

✓ **T**HAILAND

✓ **T**AIWAN

✓ **M**ALAYSIA

✓ **I**NDONESIA

✓ **U**SA

# Reference Project

## ASAHI KASEI - JAPAN

---

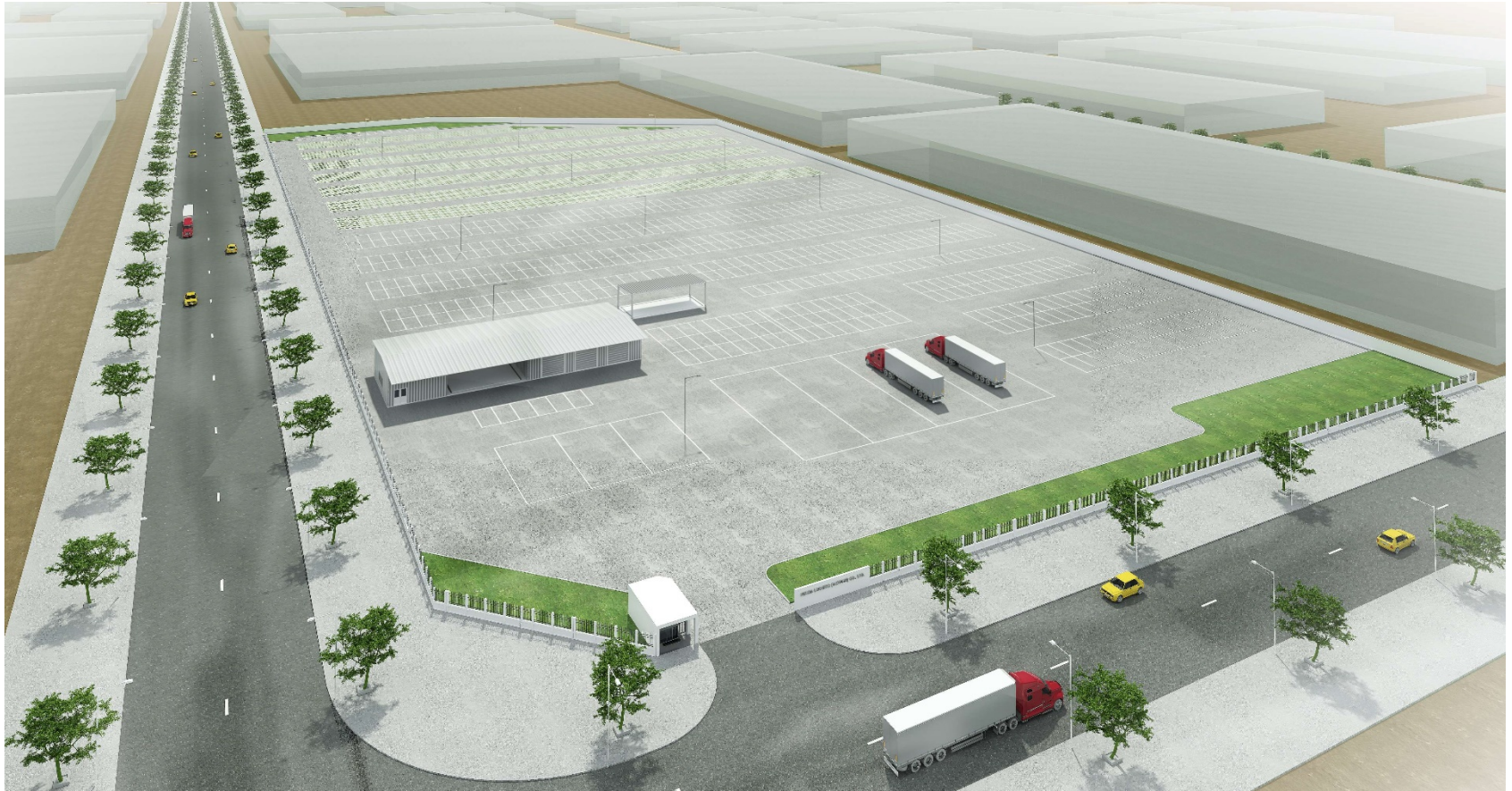




# Reference Project

## HONDA LOGICOM (VIETNAM) - JAPAN

---





# Reference Project

## OJITEX - JAPAN

---





# Reference Project

## KYODO PRINTING - JAPAN

---





# Reference Project

# VINA TAK FACTORY- JAPAN

---



# Reference Project

# PROCEEDING FACTORY- JAPAN





# Reference Project


# MEGATEC FACTORY- JAPAN

---



## NEW FACTORY FOR MEGATEC CO.

INVESTOR: MEGATEC CO. LTD

CONSULTANT:  SAIGON CONSTRUCTION CONSULTANTS CO., LTD

# Reference Project

## TAISEI BIJUTSU PRINTING FACTORY– JAPAN

---



# Reference Project

## NAGAI FACTORY- JAPAN

---



# Reference Project

## TOSHIBA ASIA FACTORY – JAPAN

---





# Reference Project

## TERUMO FACTORY – JAPAN

---





# Reference Project

## NAGAE FACTORY – JAPAN

---





# Reference Project

## WASHIN FACTORY – JAPAN

---





# Reference Project

## SAILUN OFFICE – CHINA





# Reference Project

## SAILUN DORMITORY – CHINA



PROJECT: DOMITORY  
OWNER: SAILUN  
CONSULTANT: SAIGON  
CONSTRUCTION CONSULTANTS Co., Ltd



# Reference Project

## PUMA FACTORY – PROPOSAL OPTION



CONSULTANTS:



**SAIGON**  
CONSTRUCTION CONSULTANTS CO., Ltd

Tel : (84-8) 8113054 - 8118060 - Fax : (84-8) 8118061

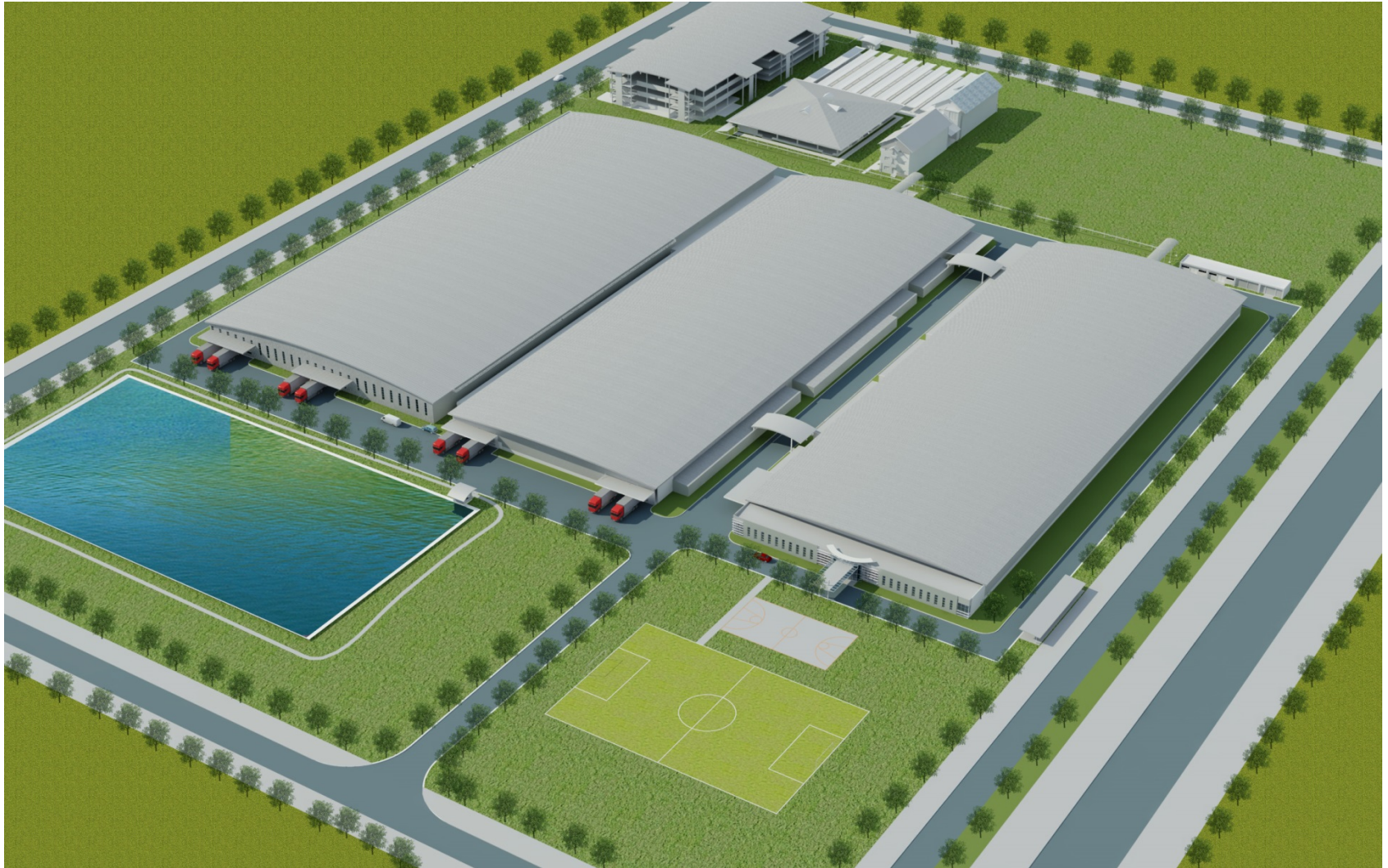
Email : [saigoncc@hcm.vnn.vn](mailto:saigoncc@hcm.vnn.vn) - Website : [www.saigoncc.com.vn](http://www.saigoncc.com.vn)



# Reference Project

## ALLIANCE ONE FACTORY – THAILAND

---





# Reference Project

# TOA PAINT- THAILAND

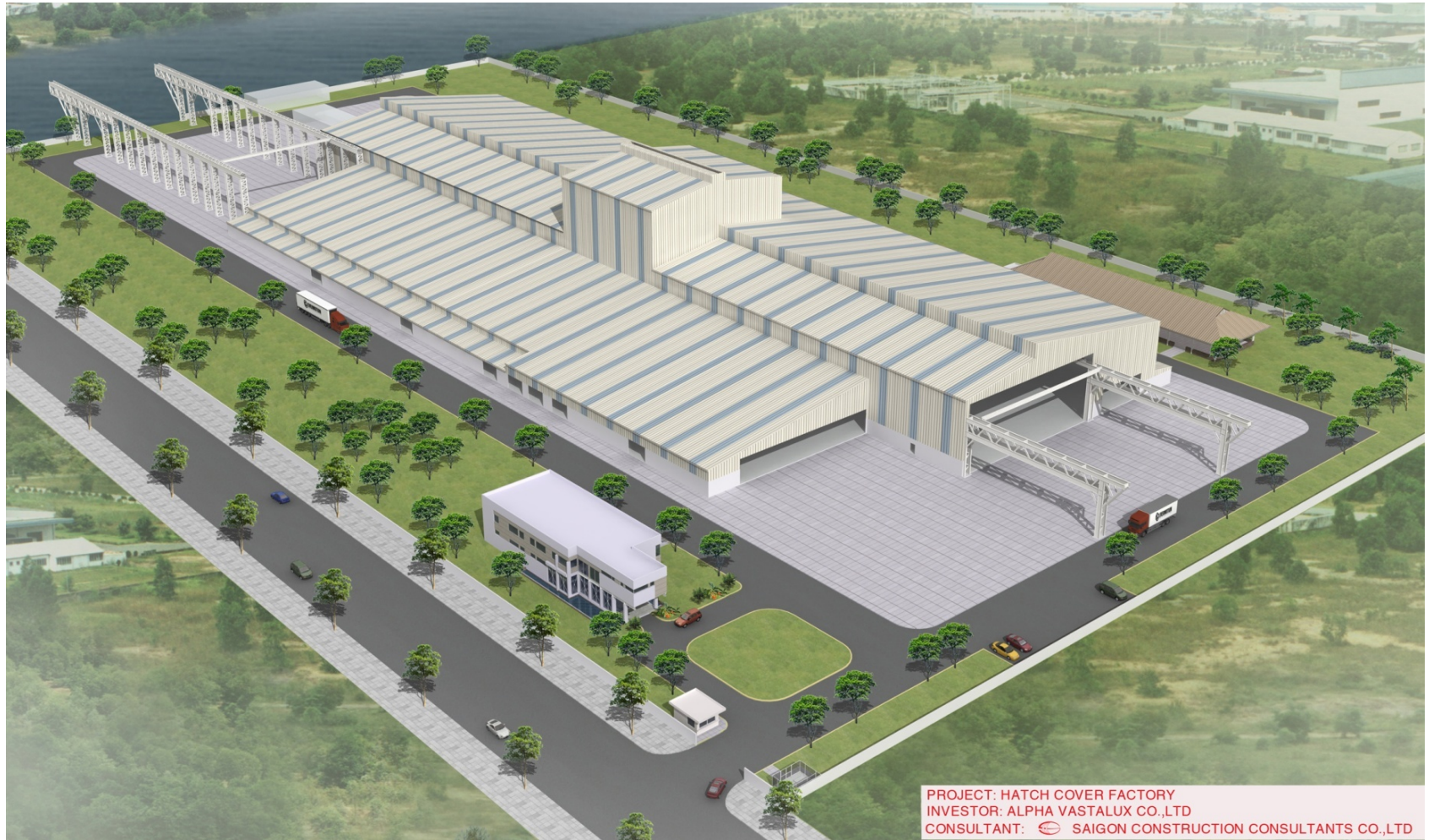


OWNER : TOA VIETNAM CO. LTD  
PROJECT : TOA VIETNAM FACTORY  
CONSULTANT :  SAIGON CONSTRUCTION CONSULTANTS Co.,Ltd



# Reference Project

## HATCH COVER FACTORY – CANADA



PROJECT: HATCH COVER FACTORY  
INVESTOR: ALPHA VASTALUX CO.,LTD  
CONSULTANT:  SAIGON CONSTRUCTION CONSULTANTS CO.,LTD




# Reference Project

# ALLIED TECHNOLOGIES - SINGAPORE

SAIGON HIGH TECH PARK

PROJECT : ALLIED TECHNOLOGIES FACTORIES

CONSULTANT :  SAIGON CONSTRUCTION CONSULTANTS Co., Ltd





## Reference Project

# CASARREDO FACTORY- SINGAPORE





# Reference Project

# TERRACED FACTORIES- VSIP





# Reference Project

## DETACHED FACTORIES- VSIP





# Reference Project

# KONIVA- HYUN JIN CORP - KOREA



OWNER : KOVINA FASHION FACTORY  
PROJECT : KOVINA FASHION INC  
CONSULTANT :  SAIGON CONSTRUCTION CONSULTANTS Co.,Ltd



# Reference Project

# SHIN SUNG- KOREA



**PROJECT:** PROPOSED CONTRUCTION AND COMPLETION  
OF SHIN SUNG FACTORY

**OWNER:** SHIN SUNG VIETNAM Co., Ltd

**PROJECT MANAGEMENT & CONSULTANT:**  SAIGON CONSTRUCTION CONSULTANTS Co., Ltd

# Reference Project

# UNI PRESIDENT - TAIWAN

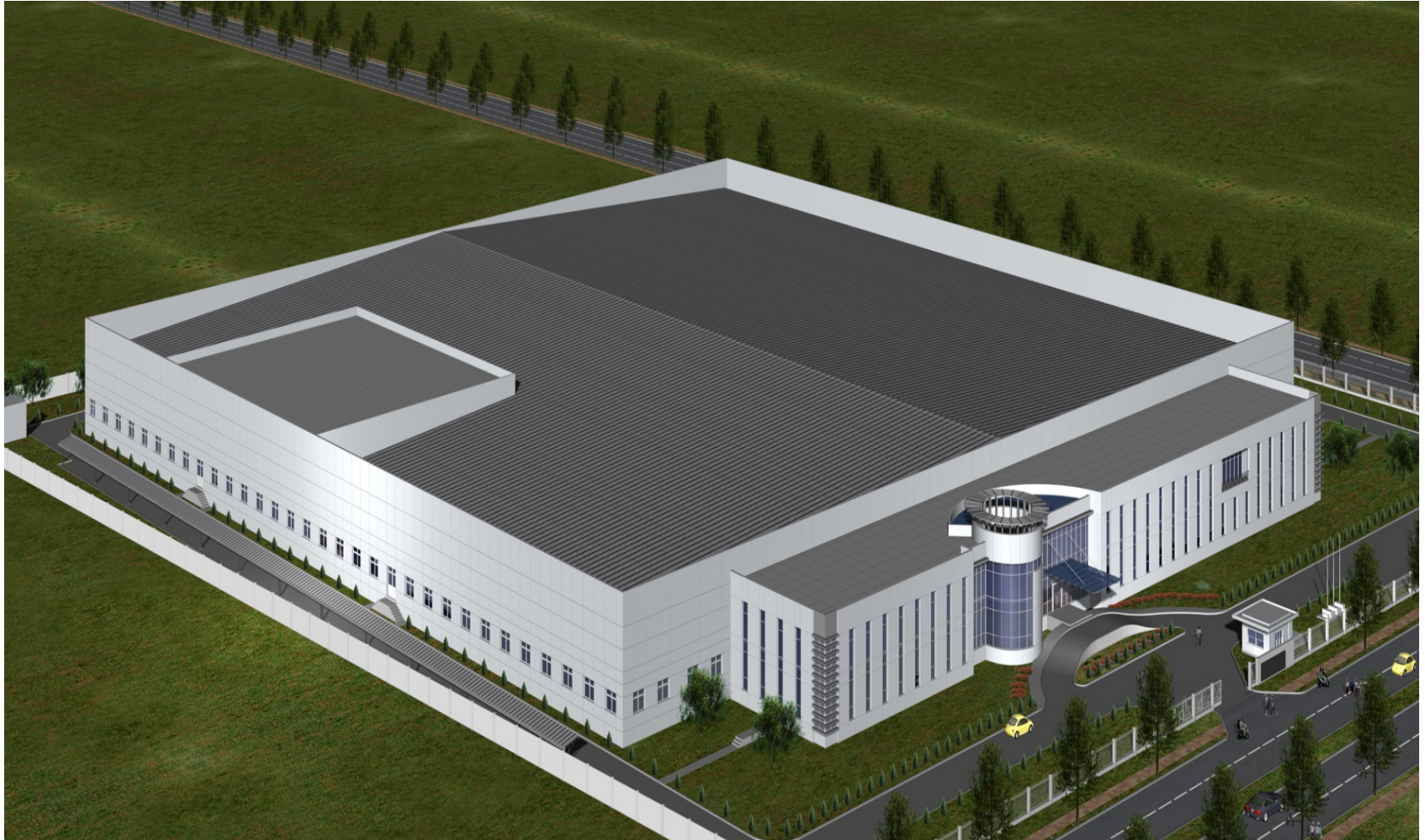




# Reference Project

## RITEK CORP. - TAIWAN

---





# Reference Project

# DIINH LONG FACTORY- TAIWAN



DỰ ÁN : NHÀ MÁY DIINH LONG VIỆT NAM  
CHỦ ĐẦU TƯ : CÔNG TY TNHH DIINH LONG VIỆT NAM  
TƯ VẤN : CÔNG TY TNHH TƯ VẤN XÂY DỰNG SÀI GÒN



# Reference Project

# JORN TECHNOLOGY - TAIWAN






# Reference Project

## YOW CHENG CARTON BOX FACTORY - TAIWAN

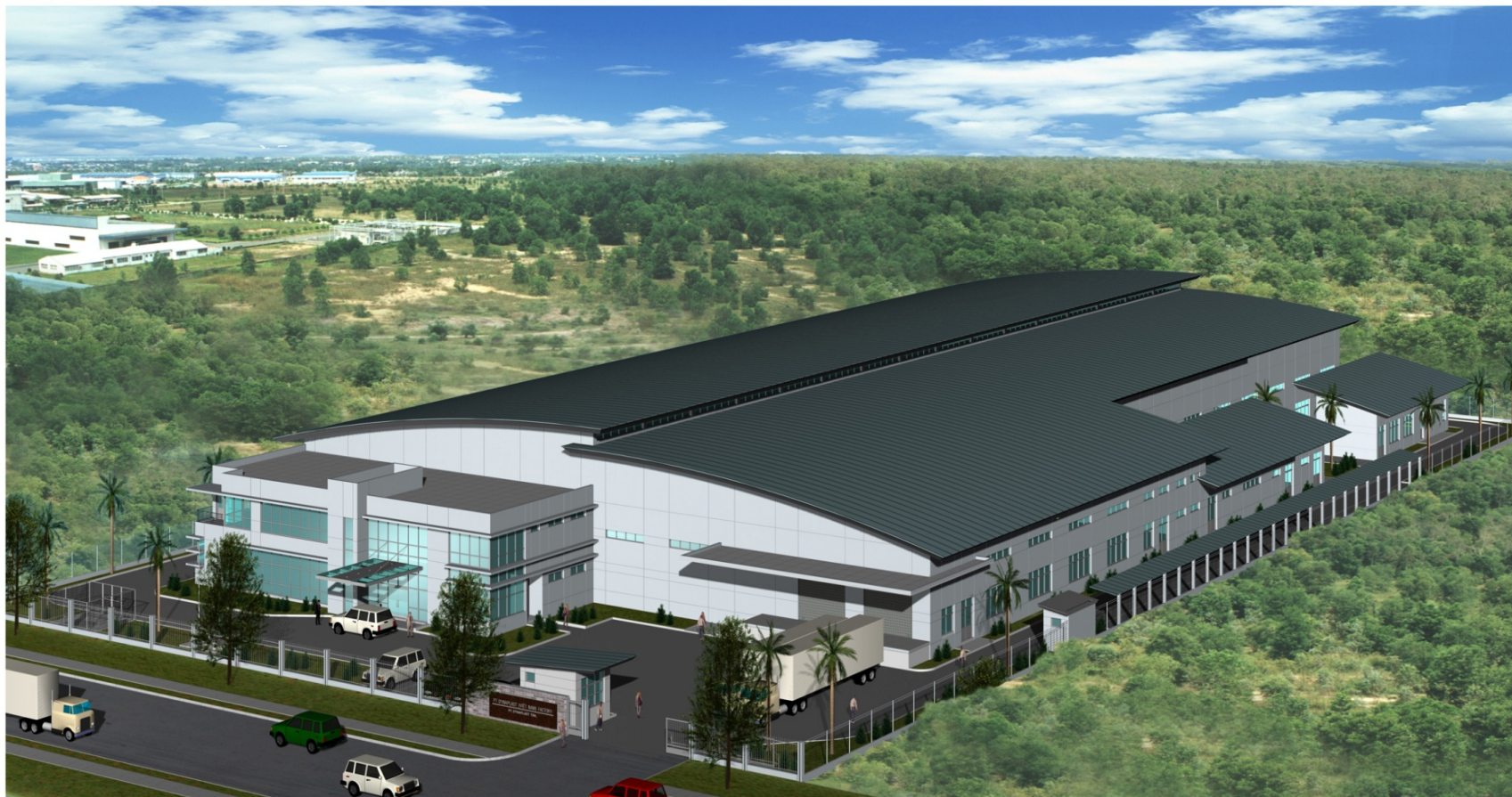


.Dự án : NHÀ MÁY BAO BÌ CARTON CHUÔNG NGUYÊN  
.Chủ đầu tư : NHÀ MÁY BAO BÌ CARTON CHUÔNG NGUYÊN  
.Tư vấn :  CÔNG TY TNHH TƯ VẤN XÂY DỰNG SÀI GÒN




# Reference Project

# PT DYNAPLAST- INDONESIA



## VIETNAM SINGAPORE INDUSTRIAL PARK

PROJECT  
INVESTOR  
CONSULTANT

: PT DYNAPLAST (VIỆT NAM) FACTORY  
: PT DYNAPLAST TBK.  
:  SAIGON CONSTRUCTION CONSULTANTS Co., Ltd



# Reference Project

# SAN MIGUEL- PHILIPPINE

**PROPOSED CONSTRUCTION & COMPLETION OF A SINGLE - STOREY FACTORY  
AND PART 2-STOREY OFFICE FOR SAN MIGUEL (VIETNAM)**



**OWNER: SAN MIGUEL (VIETNAM) CO., LTD**

**CONSULTANT: SAIGON CONSTRUCTION CONSULTANT Co., Ltd.**

# Reference Project

## ANTARA COLD STORAGE- USA





# Reference Project

## PHUONG DONG FACTORY – VIETNAM

---



# Reference Project

## BOURBON AN HOA READY FACTORY– FRANCE

---





# Reference Project

## TAN TAN FACTORY – BINH DUONG



**DỰ ÁN:**

**CHỦ ĐẦU TƯ:**

**TƯ VẤN THIẾT KẾ:**



**NHÀ MÁY TÂN TÂN**

**CÔNG TY TNHH THƯƠNG MẠI VÀ CBTP TÂN TÂN**

**CÔNG TY TNHH TƯ VẤN XÂY DỰNG SÀI GÒN**

# Reference Project

## SMC HIEP PHUOC FACTORY – VIETNAM

---





# Reference Project

ASIA  
COMMERCIAL  
BANK

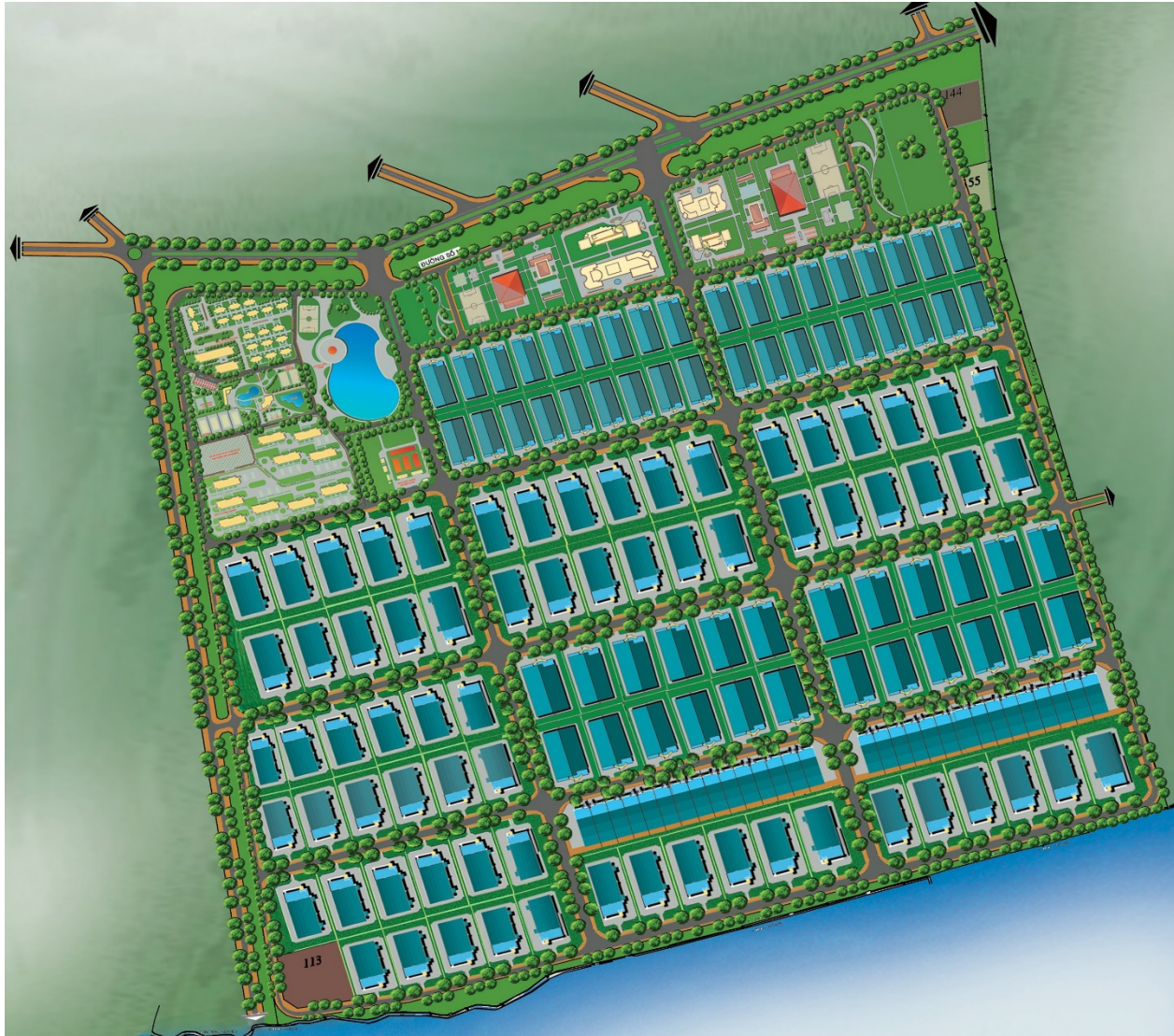
ACB



# Reference Project

## LINH TRUNG 3 EPZ – CHINA (300Ha)

---





# Reference Project

## HEAD OFFICE - LINH TRUNG 3 EPZ (0.5 Ha)



PROJECT:  
INVESTOR:

CONSULTANT:



NHÀ ĐIỀU HÀNH ( HEAD OFFICE ).  
CÔNG TY LIÊN DOANH KHAI THÁC KINH DOANH KHU  
CHẾ XUẤT SÀI GÒN LINH TRUNG (SEPZONE-LINH TRUNG)  
SAIGON CONSTRUCTION CONSULTANTS Co., Ltd

# Reference Project

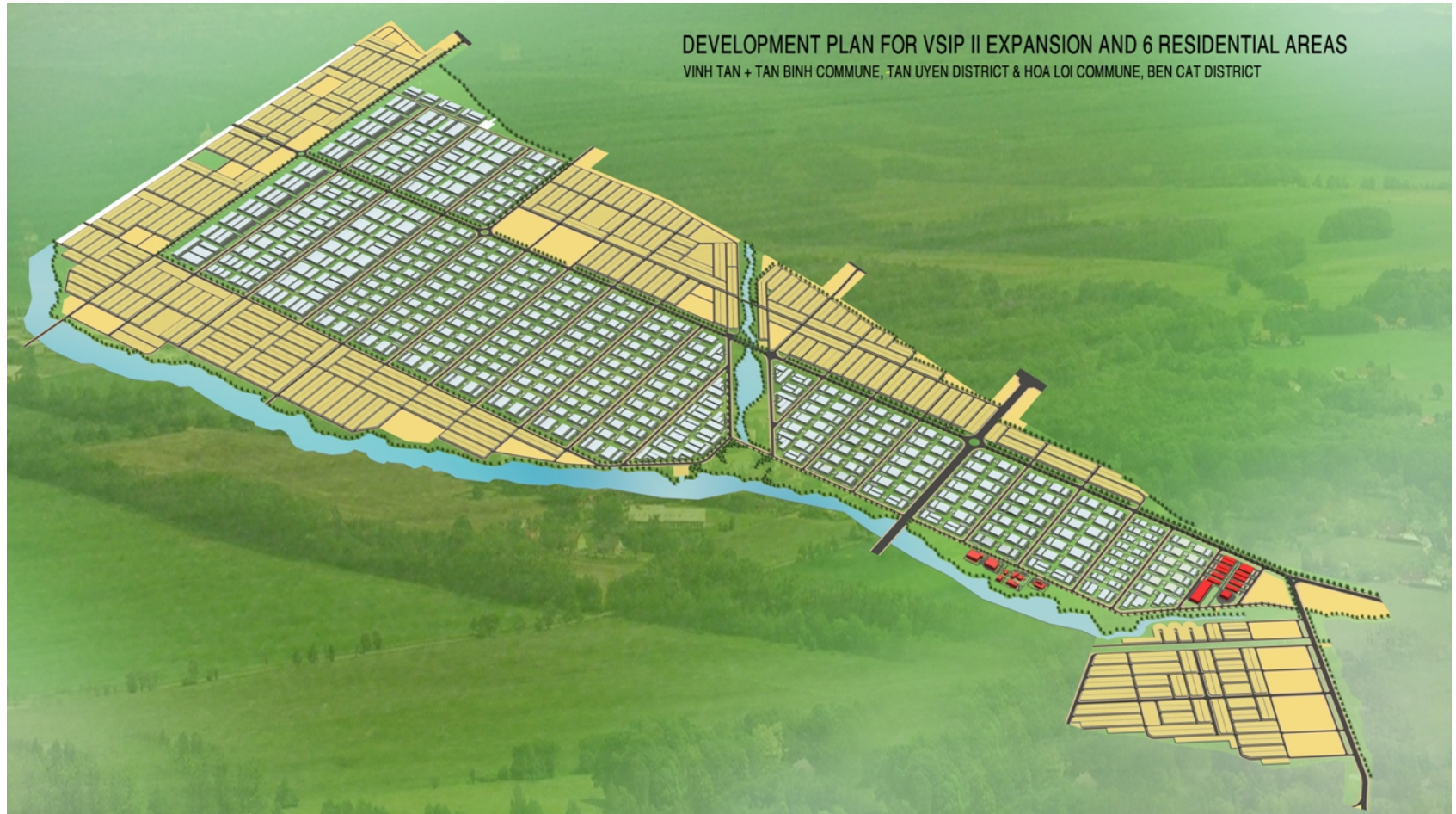
## VSIP 2 –(344 Ha)





# Reference Project

## VSIP 2 – EXPANSION & 06 RESIDENTIAL AREAS (1,715 Ha)



# Reference Project

## THAI HOA EPZ – VIETNAM (100 Ha)

---





# Reference Project

## LONG GIANG EPZ (540 Ha)





# THE WAY TO RUN A PROJECT

THE WAY TO RUN A PROJECT



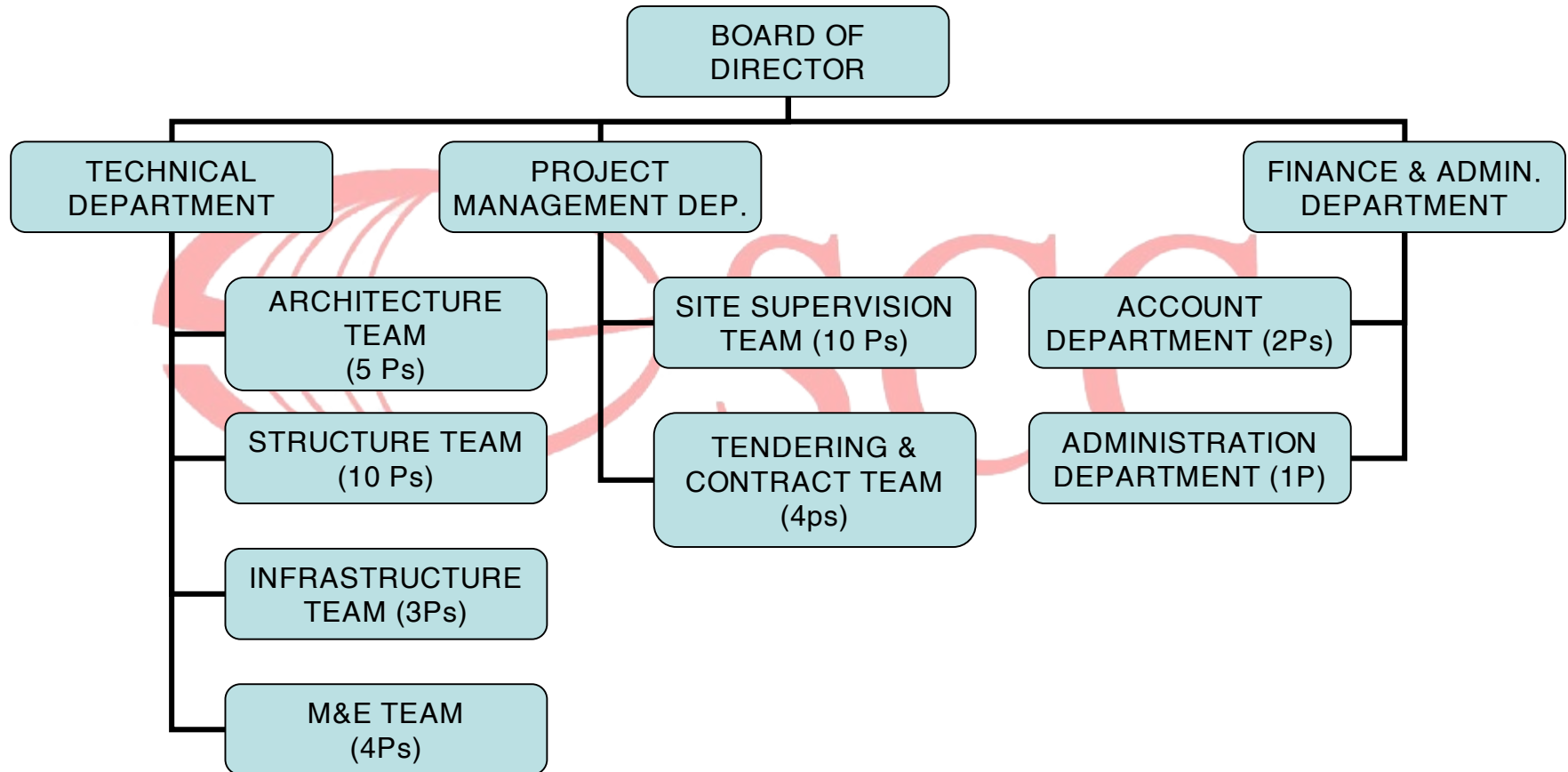
# Project

## SCOPE OF WORKS

---

- ✓ ***P*** *OST SANCTION DESIGN*
- ✓ ***D*** *ETAILED DESIGN*
- ✓ ***P*** *ROCUREMENT*
- ✓ ***S*** *TATUTORY APPROVALS*
- ✓ ***C*** *ONSTRUCTION MANAGEMENT*

# Project SCC ORGANIZATION CHART





# Project

## POST SANCTION DESIGN

---

- ✓ **I** *INTERFACE WITH OWNER TO ESTABLISH DESIGN CRITERIA*
- ✓ **L** *IAISE WITH AUTHORITIES TO CONFIRM THE STATUTORY REQUIREMENTS FOR SUBMISSION*
- ✓ **L** *AYOUT FOR ALL BUILDINGS, EQUIPMENT, FLOWSHEET DRAWINGS*
- ✓ **D** *ETAILED PROJECT PROGRAMME*
- ✓ **D** *ETAILS OF COST CONTROL SYSTEM*
- ✓ **S** *SHE PLAN & PROCEDURES*

# Project

## DETAILED DESIGN

---

- ✓ *A* RCHITECTURAL
- ✓ *S* TRUCTURAL
- ✓ *I* NFRASTRUCTURE
- ✓ *M* & *E*



# Project PROCUREMENT

---

- ✓ ***T O PREPARE TENDER DOCUMENT (Including specification, qualification of vendors & contractors, terms and conditions of contract, BOQ, drawings and necessary documents)***
- ✓ ***TENDER EVALUATION & NEGOTIATION***
- ✓ ***T O PREPARE CONTRACT DOCUMENT***
- ✓ ***T O CERTIFY ON PAYMENT CERTIFICATE***

# Project STATUTORY APPROVAL

---

- ✓ **E** NVIRONMENTAL IMPACTED STUDY APPROVAL
- ✓ **T** ECHNICAL DESIGN APPRAISAL
- ✓ **F** IRE FIGHTING APPRAISAL
- ✓ **S** ITE INSPECTION
- ✓ **C** ONSTRUCTION PERMIT
- ✓ **A** S-BUILT DOCUMENT



# Project PROJECT MANAGEMENT

---

- ✓ **S**ET UP, MANAGE, SUPERVISE AND ACROSS  
COORDINATE ALL FUNCTIONAL UNITS
- ✓ **I**NTERFACE WITH OWNER
- ✓ **L**IAISE WITH COMPETENT AUTHORITIES
- ✓ **M**ANAGE TIME BY PLANNING & MEETING SCHEDULE
- ✓ **C**OST CONTROL
- ✓ **R**ISK MANAGEMENT

# Project QUALITY ASSURANCE

---

- ✓ *T QM OVERVIEW*
- ✓ *Q UALITY OF THE DESIGN*
- ✓ *Q UALITY OF THE CONFORMANCE*



# Project

## QUALITY OF THE DESIGN

---

- ✓ ***D*** *ESIGN PROCEDURES MANUAL*
- ✓ ***W*** *ORK BREAKDOWN STRUCTURE(WBS)*
- ✓ ***S*** *QUAD CHECKS*
- ✓ ***S*** *CHEDULE*

# Project SAFETY CONTROL

---

✓ *S*AFETY DOCUMENTS

✓ *S*AFETY FACILITIES

✓ *S*AFETY PROCEDURES

✓ *S*AFETY ACTIVITIES



# Project SAFETY DOCUMENT

---

- ✓ ***P*** *roject Safety policy : SSHE*
- ✓ ***P*** *roject SSHE goal:*
- ✓ ***P*** *roject SSHE Induction course*
- ✓ ***P*** *roject SSHE hand book: prepare by SCC, approved by the Owner, issue by main contractor to every worker after Safety Induction Training*

# Project

## QUALITY OF THE CONFORMANCE

---

- ✓ **E** *NGINEERING PROCEDURES MANUAL*
- ✓ **W** *ORK BREAKDOWN STRUCTURE(WBS)*
- ✓ **I** *NSPECTION & DOCUMENTING OF*
  - *Material, equipment delivered to the Site*
  - *Testing samples of construction, electrical, mechanical equipment to obtain necessary testing certificates*
- ✓ **I** *NTEGRATED SCHEDULE*
- ✓ **P** *ROGRESS REVIEW MEETING*



# Project

## SAFETY FACILITIES

---

- ✓ *S*ite fence, main gate, sub gate, lighting
- ✓ *S*afety team, site security guards– collaboration with IP and Local Authorities
- ✓ *S*afety sign boards & Direction boards system
- ✓ *S*afety training room
- ✓ *S*ite clinic, - collaboration with a hospital
- ✓ *T*oilet
- ✓ *W*aste matter disposal place

# Project

## SAFETY CONTROL PROCEDURES

---

✓ **P** ermit to work

✓ **G** round disturbance

✓ **W** orking at heights

✓ **C** onfined space entry

✓ **E** nergy isolation

✓ **L** ifting operations

✓ **D** riving safety

✓ **M** anagement of change



# Project

## SITE SAFETY ACTIVITIES

---

- ✓ **P** eople entrance card OR safety trained card system: (prepared by SCC, approved by the Owner, issued by main contractor )
- ✓ **E** quipment entrance inspection: (prepared by SCC, approved by Owner)
- ✓ **S** CC's safety officer patrol on site
- ✓ **S** ite weekly safety patrol (SCC, Owner, contractors)
- ✓ **J** ob Pre-start meeting: daily
- ✓ **T** oolbox talk topics: before starting new work
- ✓ **S** afety reports (daily, weekly, monthly, end of project) to monitor, record and adjust performance
- ✓ **W** eekly or stage site safety update – send to Eng. for weekly site meeting
- ✓ **M** onthly safety report– send to Owner & Local authority



Customer' satisfaction is our target

THANK YOU SO MUCH